

Introduction to Microbiology

Lecture Outline - Module 1

Resources:

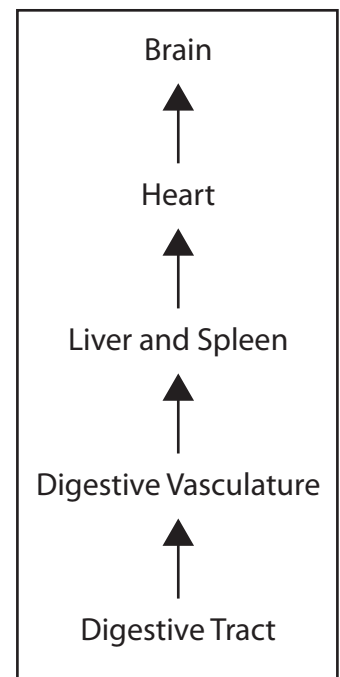
<https://mosaicscience.com/story/what-happens-after-you-die/>

With any remaining time, we will review components of the Reading Outline.
Please have your Reading Outline available for lecture purposes.

1. The Body as a Dynamic Ecosystem
 - A. Locations
 - i. Skin
 - ii. Digestive Tract
 - B. Bacterial Classifications
 - i. Mutualistic
 - ii. Commensal
 - iii. Pathogenic
 - C. Ecological Diversity between individuals
 - D. Immune System Effect on Microbial Populations

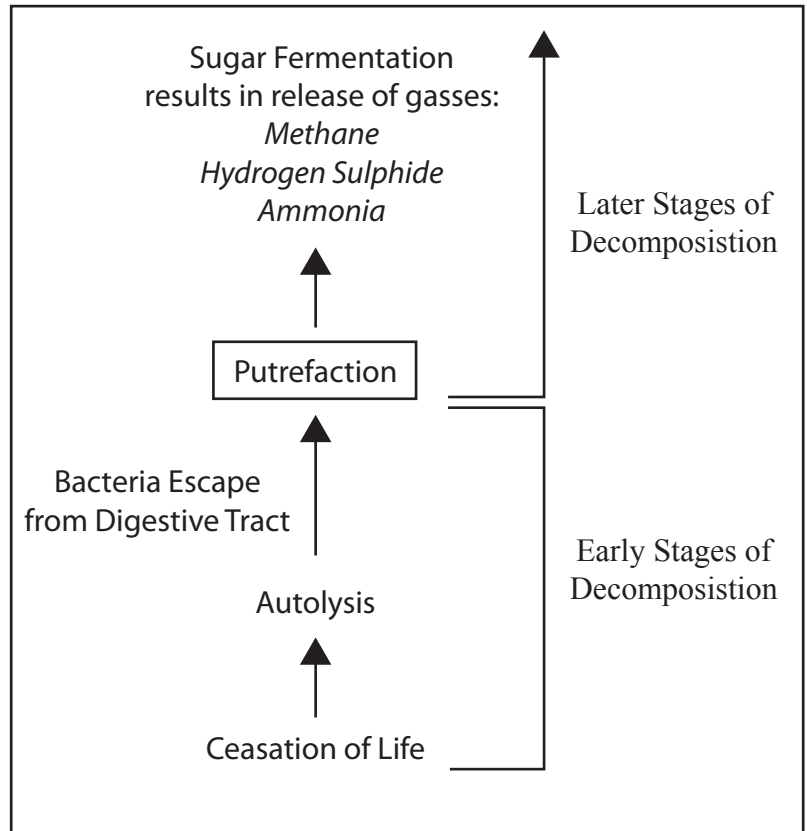
2. Ecosystem Changes upon the Cessation of Life
 - A. Immune System stops Functioning
 - B. Transition from Aerobic to Anaerobic conditions

- C. Autolysis and nutrients
 - i. Liver
 - ii. Blood Vessels Compromised
 - iii. Remaining Tissues
- D. Invasion of internal organs
- E. Migratory Pathway
 - i. Pathway Dynamics
 - ii. Species Diversity During Specific Stages of Decomposition
 - iii. Consistency of Microbiome Changes
 - iv. Tissue Density Differences
- F. Rigor Mortis
 - i. Skin



- 3. Putrefaction
 - A. Purge
 - B. “Cadaver Decomposition Islands”

- C. Rate of Purification
- 4. Necrophagous Animals
- 5. Predator Animals
- 6. Scavenger Animals
- 7. Conclusion



With any time remaining, we will review components of the Reading Outline. Please have your Reading Outline available for lecture purposes.